

Columbia Underground

News of the Columbia Garden

February 2011

President Karen Blackmore 442-1873

Jan 29-Mar 27

Mo. Bot. Orchid Show

Feb 14, 1 p.m.

See the Beauty in the Great Raptors

Mar 14, 1 p.m.

Attracting, Protecting and Photographing Beautiful Butterflies

Apr 12-14

FCGM State Convention, Branson

Apr. 11, 1 p.m.

Planting Seeds Worldwide

Apr. 19

Clean UP Columbia

April 30

Plant and Bake Sale

May 5

Cent. Dist. Spring Meeting

May 9, 1 p.m.

Bringing Beauty to our Flower Show through Training in Horticulture and Design

May 16-21

Bloomin' Bus Tour, Niagara Falls

May 27-30

NGC Convention, Washington DC

Jun. 4

CGC Flower Show

Jun 5-11

National Garden Week

Jun 13, 8:30a.m.

CGC Member Garden Tour

Aug 8, 11a.m.

Discovery Garden Tour (optional meeting)

Aug 17

FGCM Federation Day at Missouri State Fair

Sept 12, 12 noon

Sharing the Bounty and Beauty of our Labor-carry in luncheon

Sept 14

Cent. Dist. Fall Meeting

Oct 10, 1p.m.

Seeing the Beauty of Bonsai

Nov. 21, 1p.m.

Beauty of Hostas

Nov. 13-15

FGCM Fall Board Meeting

Dec. 12, noon

Celebrating the Beauty of Garden Club



At our meeting on February 14th, you are sure to enjoy the beauty in

The Great Raptors

brought to us by students from MU who work in this amazing program. Amber Edwards will speak to us about the birds available at the time of our meeting and we should have three of them to see up close and personal. I hope everyone will be able to attend and enjoy these marvelous guests!



Be a part of something BIG!

February 18-21, 2011

www.BirdCount.org

The 14th Annual Great Backyard Bird Count

We will have more information at the February meeting.

In his book **Thrive**, author **Dan Buettner** says that more money after you have reached a certain level does not mean more happiness. That level for a family of four is \$75,000.00 on average in the US. He found that “things” do not make you happy for very long but memories of things you do last forever. He also says his research shows that joining a club where you must attend a meeting once a month adds more happiness that **doubling** your income. So, if you know someone who needs to be happier, bring them to the meeting.

Hopefully the weather will be better for the February meeting. Surely...in a note from Carolyn Doyle, she says “**Man plans; God laughs**”. I thought that was so appropriate as we go about planning for the fun summer ahead. I know this will be our best ever!

Unless otherwise noted, our meetings take place at: Trinity Presbyterian Church, 1600 West Rollins Road, Columbia, Mo 65203. Phone: 445-4469. We always welcome new members and guests. Meeting canceled if school is canceled.

Treasurer's Report

January 31, 2011

December 31, 2010 Checking Account Balance		\$1592.68
Debit correction/Dec. church rental	5.00	
Income/silent auction	21.00	
		26.00
Disbursements		
Feb. church rent + \$5 due Dec.	\$30.00	
Alice Havard – The Bluffs	84.91	
Karen Blackmore (stamps, printing, mailing)	26.26	
		141.17
January 31, 2011 Checking Account Balance		\$1477.51
Certificate of Deposit Balance		3134.85
Total Assets		\$4612.36

PLANT SALE

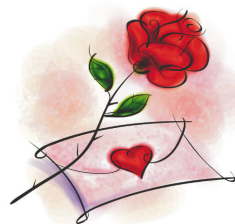
Janet Lindstrom and I are busy planning our only ways and means project for the year. We are counting on everyone to have plants, garden bazaar items and baked goods for the sale April 30. Now is the time to be planning what you will be able to do to generate money for our club treasury. Last year was a record breaking year with a \$3,365.73 profit. We spent a lot on our project in Stephens Park so need to replenish our treasury! We hope to have a couple of new items you will love. We will have two to talk to you about at the February meeting. Make sure to attend! You're gonna love it!

Connie Blackmore

FLOWER SHOW JUNE 4, 2011

Barbara Schuette is enjoying sunny Florida but is taking time to **write our schedule for the flower show!** We will have information at the February meeting and, in fact will have a sign up sheet for design! It is never too early to start brainstorming and gathering things you will need to come up with a winning design! If you have not participated before, again, you're gonna love it! Remember...in order to qualify for top awards, our club must have 50% member participation in the show, either by entering or by helping. That means 32 of you have to get involved but how nice if we could have 100% participation. Find out how you can help!

Hint: Design classes are "Vacation Destinations".
Fun, fun, fun!



I plan to place an order for **Kincaid Plant Markers** in March or April. I have had several people ask if I have more and I do not.. I know we could get a better price if we have a large enough order. Please let me know how many you want and, if we have enough interest, we will make another order . I will list the names of those who want the markers . Please advise if you want to be added to the list and how many you want. The price depends on how many we order. Of course you may order them direct from Kincaid by going to: kincaidgardens.com

Linda Rubin, Jane Sadler, Marie Pasley

As I finish up the newsletter, we have 12" to 18" of snow! I sure hope this is it! I guess I don't have to tell you to be careful. I am thinking all of us have figured this out after all the snow we have had already! Hopefully the snow will all be gone by the time we meet on the 14th.

Minutes

January 10, 2010

President Karen Blackmore called the meeting to order at 1:15 p.m. She welcomed one guest, Sarah Wright. Gayle Fry introduced our guest speaker, Dave Stonner, a photographer for the Missouri Department of Conservation. He presented a slideshow of some of his favorite photographs he has taken for the Missouri Conservationist and then he gave us some helpful photography tips.

The business meeting was called to order at 2:20. President Karen read a poem entitled Winter for our inspiration. The December minutes and treasurer's report were approved. Lily Chan approached the club about donating some money to the CBS/Newman Interfaith Garden. Gayle made a motion to give \$120 to them for soil for raised beds. Carolyn Doyle seconded the motion. The members voted down the request. President Karen will get more information about this project and we will discuss it more at our next meeting. Carolyn Doyle brought books of evidence from three previous flower shows for people who have never been involved with a show to look at for ideas. She also talked a little bit about what a flower show is. Lynn Birkby still has slots to fill for taking arrangements to the library and Wyatt Guest House. Gayle Fry had some cards available for people to take and sign up for free subscriptions to the Missouri Conservationist. Marie Pasley announced that a new Master Gardener class begins February 8. For more information, please contact the Boone County Extension Office. Due to the snowy weather, our meeting was cut short and President Karen adjourned the meeting at 2:52.

Courtesy Committee: If you know of any member who is ill, please notify Carol Notbohm, Courtesy Committee Chair, or Rose Mayfield, Courtesy Committee member, so they can send a card from the Columbia Garden Club! There may be other occasions when you feel we should send a "courtesy" to someone. Just notify Carol or Rose.

To new members: We ask that all members sign up for at least one project (and more if you want). Please look at the projects listed in the yearbook on pages 12 and 13 and let President Karen know which project you choose. All the projects are fun, and the very best way to get to know us is to get involved. Do not be intimidated, as we welcome your input, experience, ideas, time and energy! We are proud of our long standing club and want you to have the full experience of the Columbia Garden Club. Welcome!

HOSPITALITY-

Chair- Connie Blackmore

Feb: Jane Sadler , Virginia Itschner

Mar: Kay Egbert , Lynn Birkby

Apr: Carolyn Adams, Karen Blackmore

May: Leslie Rosenkrans, Lynda Blades,
Alice Havard & Barbara Rothenberger

June: Garden tours-sack lunch

Oct: Sue Williams & Kay Egbert

Nov: Evette Nissen, Rose Mayfield, Tanya Patton

Dec: Holiday Tea

HOLIDAY ARRANGEMENTS

Chair- Lynn Birkby

Daniel Boone Library

Jan: Linda Lowenberg

Feb: Alice Havard

Mar: Kay Egbert

Apr: Barb Rothenberger

May: Carolyn Adams

June: Deb Corkery

July:

Aug:

Sept:

Oct: Virginia Itschner

Nov:

Dec: Rose Mayfield

Wyatt Guesthouse

Jan: Lynn Birkby

Feb:

Mar:

Apr: Kay Egbert

May: Janet Lindstrom

June:

July: Evette Nissen

Aug: Alice Havard

Sept: Janet Lasley

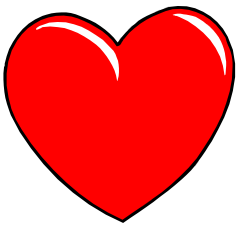
Oct: Dee Bauer

Nov: Carol Notbohm

Dec: Connie Blackmore

Yearbook Updates

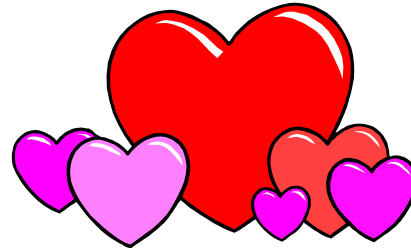
Please correct Nancy Bedan's name from Behan to Bedan. Sorry Nancy!



The Old Highway 63 location is shut down completely. The new location on Trails West Avenue is being built as you read this. Watch our website and your inbox for the latest information. You can contact us through email if you have questions or concerns. We are working hard to get the new location ready for you. We are going to have more room which means more selection to choose from. We appreciate your business and look forward to seeing you Spring 2011.

Superior Garden Center is a division of Rost Inc. Currently our phones are being answered by Rost Inc. Just ask for the garden center and we can help you. If we are not available please leave a voice mail and we will return your call.

Superior Garden Center
2450 Trails West Avenue
Columbia, MO 65202
(573) 442-9499



VINTAGE HILL FARM

5643 Hwy 87 Franklin, MO 65250

Hundreds of unusual annuals, tropicals, perennials, shrubs and roses await you. Fantastic selection of pottery and garden ornament.
Open Daily 9-5, March thru June & September & October.

Phone: 660-848-2373

E-mail: info@vintagehill.com

www.vintagehill.com

Directions: 6 miles NW of Boonville Bridge on Hwy 87

If you know of any business that might be interested in placing an ad in our newsletter, please let Karen know as we will be soliciting ads in late February. You provide the name and we will make the contact!

MIRACLE DIRT * MIRACLE MULCH

BART MENNING MIRACLE PRODUCTS

Miracle Dirt \$46	Miracle Mulch \$36	Horticultural Services
Top Soil-Dry, Screened, 30% Compost	Double Ground, Brown, 30% Compost	*Lawn Aeration
Dry, Screened top Soil \$40	Natural Mulch \$30	*Mulching
Screened Composted Manure \$30	Cedar Mulch \$40	*Seeding
Gravel-Sand	Other Mulches	*Pruning

DAVE CASEY DELIVERY 864-3340